

Parish News - May 2017

HELLO AGAIN

We hope that you have been enjoying the spring sunshine (and occasional shower of hail!) and have visited the Spinney to take in the beautiful bluebells. In this May edition of the Newsletter we have some important information about superfast broadband, the Neighbourhood Plan and HS2.

We also include updates from the Hampton-in-Arden Society and the George Fentham Trust and details about the Hampton Festival (start getting those Scarecrows ready!!). And, young or old, if you are interested in getting out and about in the community we have details about the relaunch of Scouts in the village for the youngsters and about Probus, who are looking to recruit new members. **Read on...**



NEWS FROM THE GEORGE FENTHAM TRUST

Defibrillator

The George Fentham Hampton-in-Arden Charity has installed a defibrillator on the outside wall of Fentham Meeting Room, Marsh Lane (next to the Beeches). This is available 24 hours a day and ready for use in case of an emergency.



Educational Grants 2017

If you are leaving secondary education and moving on to further education, NVQs, or on to a training scheme/apprenticeship, an educational grant may be available. Mature students who are finding it difficult to fund their studies can also make an application for assistance. Applicants must have lived in Hampton-in-Arden for a **minimum of two years** and will be required to attend a short interview in June. The closing date for applications is **24th May 2017**.

Any successful applicants will receive an annual grant, and will be required to complete 10 hours work in the community of Hampton-in-Arden, as determined by the Fentham Trust each year. Application forms and further information can be obtained from Julie Richardson, Clerk to the Trustees (clerk@georgefenthamtrust.org.uk) or from the Fentham Trust website (www.georgefenthamtrust.org.uk).

THE FESTIVAL - A WEEKEND OF NON-STOP FAMILY FUN!

It's that time of year again, when we start the build up to our fabulous Hampton Festival!

Held between the **30th June** and **2nd July**, all the usual favourites will be there including ● Church Fete stalls ● Car Show ● Bouncy Castles ● WI Bake Off ● Crafts Competitions ● Welly Wanging ● Scarecrow Competition (**Comic Book Heroes Theme this year**) and ending with the always awesome Concert in the evening.



There'll be a range of food stalls, an ice cream van, Solihull Fire Engine, the Open Air Church Service and BIG Lunch on the Sunday and much more to be confirmed... **Put the date in your diary now!!**

DOG FOULING - HOW TO REPORT ONLINE

As we are all aware, dog fouling continues to be an issue within the village. There is now an online portal for reporting dog fouling directly to Solihull MBC. (<http://www.solihull.gov.uk/Resident/Pests-pollution-food-hygiene/animal/dogfouling>).

Please do use this facility and help to make our streets cleaner.

Hampton-in-Arden Parish Council

ANTI SOCIAL BEHAVIOUR

Anti-social behaviour is reported to be on the increase locally. The Solihull Observer ran a story recently naming several areas which have become hotspots for inappropriate activity in public - and Hampton was among them. Locations for this activity were not identified, but it is believed to centre on Marsh Lane, close to the Packhorse Bridge over the River Blythe.

A police spokesman was quoted as saying that although there is no specified offence there are likely to be contraventions against common law and legislation including outraging public decency, and the police would investigate any reports of this activity going on and deal with those responsible appropriately.

His assurance was welcomed by borough councillor Alison Rolf, who lives in Hampton. She told the Newsletter: "I would support any action by the police to prevent this kind of behaviour. It's not something we want. We local people live in a lovely place and would like to keep it that way." She urged villagers to report any offensive public activity they witnessed to the police

IN REMEMBRANCE....

It saddens us to report the loss of two of our most respected ladies in the village, both of whom were a great asset to the community.

Maureen James, born in Scotland, came to the village 30 years ago and will be remembered for the time she ran the Corner Shop with her husband Malcolm, and two children Nicholas and Sallyann. She was a lady full of warmth and humour and made so many friends both young and old.

Frances Linn, had lived in the village most of her life and had two children James and Nicole. She was chair of the bowling club and a former governor of the Heart of England NHS Foundation Trust and continued to be a volunteer when her four year term ended. More recently she was a member of the Hampton Surgery Patient Participation Group and was responsible for running the volunteer Village Transport Scheme. Frances also helped to deliver the Newsletter every quarter.

Both Maureen and Frances will be greatly missed.

PROBUS

Hampton Probus Club is looking to recruit new members.

The club is for retired or semi-retired professional/business men. Monthly meetings are held at Fentham Hall with talks on a variety of topics. A walking group (known as the Probus Plodders) helps to keep oldies fit and various sports activities are organised, including bowls. Coach trips to places of interest take place frequently. Anyone interested

in becoming a Probus member should contact the secretary, Bob Sohota, on 01675 442268.

Non-members of the club living in and around the village are able to join outings if there are places available. They are always sure of a warm welcome and costs are kept down to a minimum. Ring Gary Wood on 01675 442976 for more information.

HAMPTON-IN-ARDEN SOCIETY – PRESENTATION ABOUT HS2

More than 100 people crowded into a meeting at Fentham Hall in early March to hear the latest about HS2. The meeting, organised by Hampton Society, gave villagers the opportunity to question Parish Councillors and representatives of HS2 Ltd about the 'what, when and how' of the rail project, and several concerns were raised.

Fears about heavy goods vehicles thundering through the village during the construction work were allayed. Councillor Ken Blanch said contractors' lorries would be banned from Meriden Road/High Street. Residents of Diddington Lane close to the HS2 route expressed concern about the level of noise they might have to endure - from pile-driving, for instance - and were told that although some inconvenience

was inevitable, it would be kept to a minimum and the heavier work would not go on during the evening or overnight.

Tahir Ahmed, from HS2 Ltd, told the meeting that preliminary work on the scheme had already begun and construction of the new rail line was due to start this summer. He added that ecological considerations were included in the plan and gave an assurance that wildlife would be protected wherever possible. The speakers on the platform fielded questions on a number of other subjects ranging from property blight and possible financial compensation to ongoing road safety issues. All in all a very successful evening!

HS2 – OPPORTUNITY FOR A COMMUNITY WISH LIST

As you are all aware, the HS2 contractors will start work this summer. However, there is an opportunity to have some good come from this time of disruption.

As part of their contract with HS2, the Contractor will have to engage with the village and carry out community projects. Rather than end up with a project that suits the Contractors but is not of any use to the village, the Parish Council would like to be proactive and knock on their door with a list of jobs

we would like doing.

So.... **we are asking for your help!** Please let us know of any small, community based projects you can think of which would benefit the village. These could include decorating, fencing, paving, improving community facilities but must be for the good of the whole village community. Please email Vicky Woodall (vicky.woodall@hamptoninarden.org.uk) with your ideas so we can prepare our wish list and get started!

PLANNING NEWS

We continue to monitor and respond to all planning applications within the Parish and to any major application elsewhere if it has impact on the community. If you see any development large or small that 'looks odd' please let us know via the Parish office - you are our eyes and ears!

- **Travellers Site - Shadowbrook Lane:** The appeal on this site was finally determined in favour of the Appellants and they have received approval to remain on the site in perpetuity. The approval is subject to a number of conditions including restrictions on caravan numbers and any commercial activity. We understand that the decision may still be subject to legal review.
- **Motorway Services and M42 Junction 6 improvements:** Any decisions on Motorway Services have again been postponed by Highways England and no further information is expected in the near future. Similarly, it is likely that any further consultation on Junction 6, which would follow a choice by Highways England of a 'preferred option', will not begin until later in the year.
- **Transport - An update on the Taxi-bus and Bus Service 89:** Regrettably we can announce no progress in our discussions with Transport for West Midlands (TfWM) to extend the Ring and Ride service, enjoyed elsewhere in the Borough, to the rural villages. We have joined with Meriden Parish Council to fight this, and have identified a failure by TfWM to meet the requirements of the Equalities Act 2010. We shall continue to press for positive action to help those who are less able to walk to a bus stop, or who need adapted vehicles which can take disabled trolleys via a ramp. A detailed (revised) 89 service timetable is available at: www.networkwestmidlands.com/89

AIRPORT NEWS

With the beginning of the holiday season we can expect more flights to and from the airport.

Holiday company Jet2 has based four new aircraft at the airport and began operations on 30th March serving 23 destinations.

A scheduled review of the airports night flying policy which proposed an increase in the number of aircraft movements between 11.30pm in the evening and 6am in the morning has been deferred for six months to enable more consultation to take place.

BROADBAND – DISAPPOINTING NEWS FOR THE VILLAGE

You may recall that at the start of last year we advised Parishioners that Solihull MBC had, at our request, agreed to prioritise Hampton-in-Arden within the next phase of the national broadband roll out programme. It is with regret therefore that we now have to inform you we were not included within the next phase and are even being told we are one of the many rural areas that remain to be upgraded before the end of the programme – which has now been extended to the end of 2019.

It was also frustrating to hear that whilst Solihull MBC did set aside some monies to upgrade two cabinets within the Hampton Exchange, it transpires the one cabinet that has been upgraded actually serves properties within Barston. The other upgrade is a fibre to property (FTP) upgrade but this has been delayed due to underground obstructions

being encountered, meaning the cost of the installation has spiralled and it is not currently possible to complete the installation.

The Parish Council is aware of many residents' concerns and frustrations about the situation. Whilst we will continue to put pressure on Solihull MBC, we do envisage the roll out programme will be based on potential demand for the service. **We would again, therefore, ask everyone interested in receiving Superfast Broadband to register their interest at either www.superfast-openreach.co.uk or www.cswbroadband.org.uk.** Registering your interest does not commit you in any way to having Superfast Broadband when it becomes available, but does make Openreach aware of the potential demand - on which they manage the roll out programme - is there.



ROAD AND PAVEMENTS LOG

The Parish Council now have a *Pavements, Roadworks and Streetlights Log* to ensure that any faults or required works are monitored by both Solihull MBC and the Parish Council. Any issues should, in the first instance, be notified to Solihull MBC.

However please also notify our Clerk, Julie Barnes, by e-mail (clerk@hamptoninarden.org.uk) so that the issue can be included within our new log. *The Parish Council can follow up any required works on your behalf.*

HAMPTON-IN-ARDEN SOCIETY – PLEASE JOIN US AT THE VILLAGE QUIZ

The Society is holding a Village Quiz on Friday 9th June in the Fentham Hall at 7.30pm. There will even be a few questions on Hampton! Tables of 6, join together with friends and neighbours or join a table on the night. Tickets are £8 and include fish and chip supper. Bring your own drink.

Please email www.hamptonsociety.org for tickets or further information about this event.

FUN ACTIVITIES AT OUR LOCAL LIBRARY

We would love for you to come along and join us at one (or more!) of our activities planned over the next few months. Check out our events below:

- **Storytimes for Under 5's:** 1.45pm on 2nd/16th/30th May, 13th/27th June and 11th/25th July;
- **Readers Groups:** We will meet at 10.30am on 16th May (to discuss Heart of Darkness and A Picture of Dorian Gray), the 13th June (to discuss Jeffrey Archer) and 11th

July (to discuss Peter Mayle);

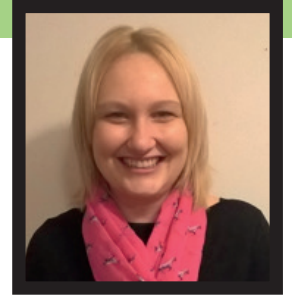
- **Reading Zoo for Under 5's:** 1.45pm on 12th and 25th May;
- **Coffee mornings:** 10am to 12pm on 2nd May, 6th June and 4th July;
- **Knit and Natter:** 1.30pm to 3pm on 5th/19th May, 2nd/16th/30th June and 14th/28th July.

NEW CLERK

Julie Barnes, our new Clerk, is settling in well to her new role and has enjoyed getting to know many of you. Please do pop in and say hello if you are passing.

You will find Julie in the Office between the hours of 9am and 11am on a Monday and Thursday. You can also contact Julie by e-mail (clerk@hamptoninarden.org.uk) or by telephone (01675 442017).

Also.... If you would like to keep up to date with village matters please do send in your e-mail addresses to Julie so that she can include you within a new e-mail circulation list.



SIGNIFICANT PROGRESS WITH OUR NEIGHBOURHOOD PLAN

We have regularly reported on the Neighbourhood Plan which, if adopted, will sit alongside the Solihull Local Plan to help decide planning applications in the area.

Following a further period of consultation the Plan was appraised by an Independent Examiner who, having made a number of recommendations, approved the Plan for a local referendum. Solihull MBC and the Parish Council has

now accepted the recommendations made and approved the holding of the referendum which is likely to be held in **July 2017**. All residents eligible to vote will be urged to cast their vote in favour of accepting the Plan which will have a significant impact on future developments in the whole of the Parish.

We will be sending out more information about the Neighbourhood Plan and the referendum shortly.

RELAUNCH OF THE 1st HAMPTON-IN-ARDEN SCOUTS GROUP

From the 27th April 2017, the Beavers and Cubs have relaunched and will meet every Thursday at the Scout and Guide Hut off Shadowbrook Lane: ● **Beavers:** 5.30pm to 6.45pm ● **Cubs:** 7pm to 8.15pm ● **A Scouts group will follow later in the year.**

Why not come along for a taster session and learn more about our exciting plans. Boys and girls can start Beavers from 5 years, 9 months and attend Cubs from 8 years to 10 years, 6 months.

For more information please e-mail firsthamptonscouts@gmail.com or visit the website <http://1sthampton.scoutsites.org.uk/>



DATES FOR YOUR DIARY

- **10th May (7.30pm):** Parish Council Annual General Meeting – George Fentham Meeting Room. All welcome to attend.
- **9th June (7.30pm):** Hampton-in-Arden Society Village Quiz – Fentham Hall
- **30th June to 2nd July:** Hampton-in-Arden Festival
- **5th July (7.30pm):** Parish Council Meeting – George Fentham Meeting Room. All welcome to attend.

THANK YOU FOR READING AND WE WILL SPEAK TO YOU AGAIN IN AUGUST

As always, thank you to all the contributors to the newsletter and the volunteers who deliver it to each household in the Parish.

Don't forget to check out our website for up to date information between Newsletters (www.hamptoninarden.org.uk)