

# Notice of daytime road closure – B4102 Meriden Road

High Speed Two (HS2) is the new high speed railway for Britain. Balfour Beatty VINCI (BBV) is working in partnership with HS2 Ltd to build the new high speed railway in your area.

## The work we will be doing

BBV will be carrying out trial hole excavations in the existing verge of the B4102 Meriden Road near to Patrick Farm. This is to identify existing utility services, construct protection slabs over existing utility services and carry out ground condition surveys.

## When these works will take place

Works are scheduled from Monday 8 March to Tuesday 16 March excluding Saturday and Sunday. These works are subject to weather conditions.

The road will be closed between 9.30am and 3.30pm each day, pedestrian access will be maintained throughout the closure. There will be advanced warning signs placed on the B4102 Meriden Road and we will also keep you updated through [www.hs2insolihull.co.uk](http://www.hs2insolihull.co.uk). There will be a fully signed diversion in place during the closure - **please see map overleaf**.

## HS2 during the Coronavirus pandemic

We are continually reviewing the works on our construction sites in line with Government and Public Health England (PHE) advice on dealing with COVID-19. The Government's current COVID-19 strategy makes clear that construction activity can continue, as long as it complies with this guidance. The health and safety of our workforce and the communities we affect is our key priority. Please be assured that those sites that are currently still working are doing so because they can operate within PHE and construction industry guidelines.

**If you have a question about HS2 or our works, please contact our HS2 Helpdesk team on 08081 434 434 or email [hs2enquiries@hs2.org.uk](mailto:hs2enquiries@hs2.org.uk)**

## Notification



### Duration of works

- Works are scheduled from Monday 8 March to the Tuesday 16 March excluding Saturday and Sunday.
- Our working hours will be 09.30am until 3.30pm.
- Our workforce may be on site one hour before and after to set up and take down our work equipment.

### What to expect

- Vacuum excavator, small hand tools, survey equipment and welfare facilities.
- Low levels of noise from the work we are completing.

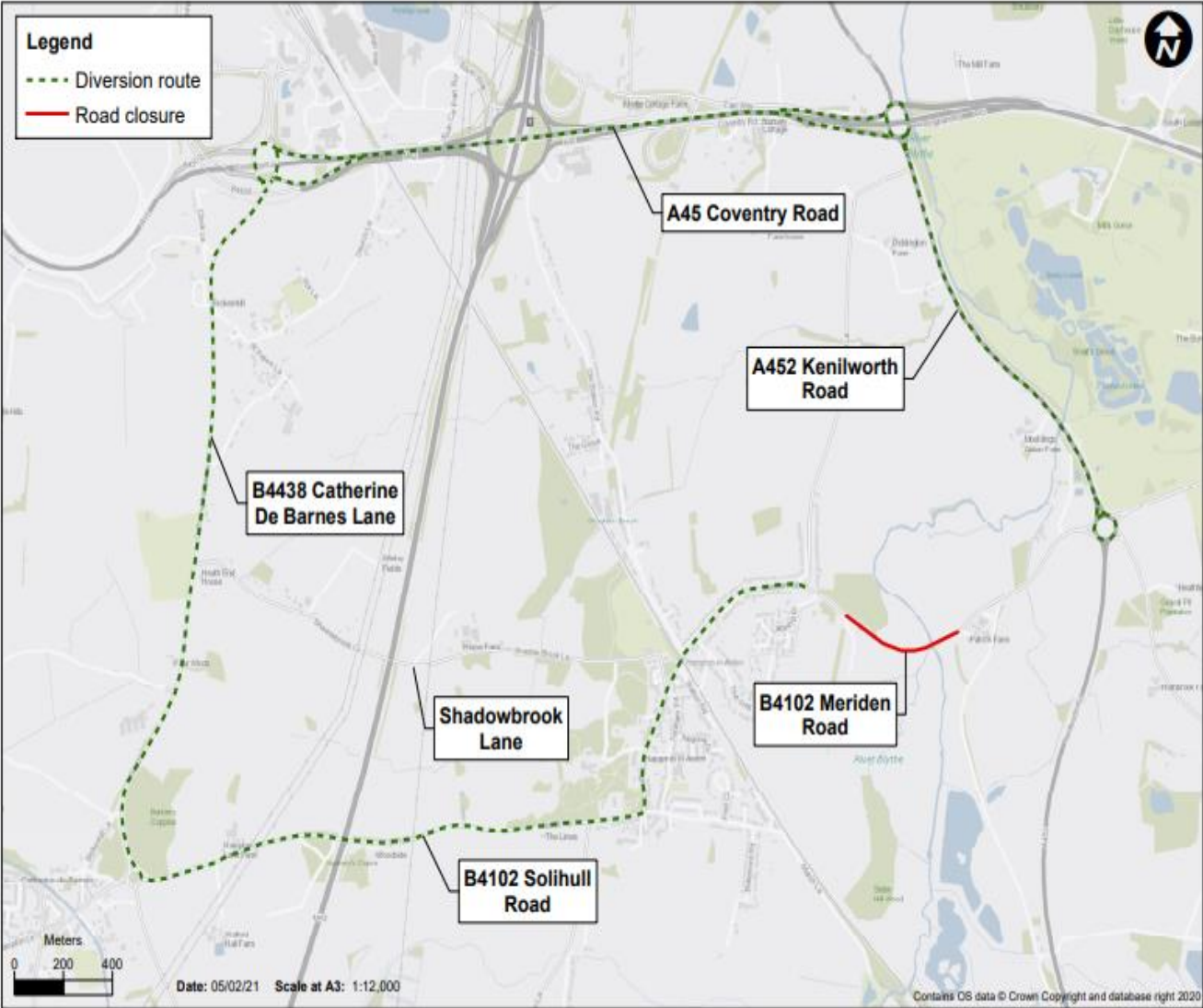
### What we will do

- Keep you up-to-date with any changes at [www.hs2insolihull.co.uk](http://www.hs2insolihull.co.uk)
- Keep all sites safe and secure.

# Notice of daytime road closure – B4102 Meriden Road

[www.hs2.org.uk](http://www.hs2.org.uk)

## Location Map



# What else is happening in your area?

## Contact our HS2 Helpdesk team

Our team is here to listen and respond to your enquiry, complaint or feedback to help us be a good neighbour.

You can contact our Helpdesk team all day, every day of the year on:

Freephone: **08081 434 434**

Minicom: **08081 456 472**

Email: [hs2enquiries@hs2.org.uk](mailto:hs2enquiries@hs2.org.uk)



## Keep up-to-date with your local community website

To find out more about what's happening in your area and receive regular email updates, you can sign up to our local community websites at: [www.hs2inyourarea.co.uk](http://www.hs2inyourarea.co.uk).

## About our Community and Business Funds

We are offering two funds that are available to local communities and businesses between the West Midlands and London, to help with the disruption caused by our construction work. These are the Community and Environment Fund (CEF) and the Business and Local Economy Fund (BLEF).

The CEF is designed to give communities the opportunity to share in the benefits of HS2. It is an allocated fund that communities are able to apply for, to help to support local projects that aim to improve their local area.

The BLEF is designed to support local economies that may be disrupted by the construction of HS2. BLEF grants are for local business support organisations and local authorities to help maintain business activity in local communities.

For more information about each of these funds, including how to apply, please visit: <https://www.groundwork.org.uk/hs2funds>



## Keeping you informed

We are committed to keeping you informed about work on HS2. This includes ensuring you know what to expect and when to expect it, as well as how we can help.

### Residents' Charter and Commissioner

The Residents' Charter is our promise to communicate as clearly as we possibly can with people who live along or near the HS2 route. [www.gov.uk/government/publications/hs2-residents-charter](http://www.gov.uk/government/publications/hs2-residents-charter)

We also have an independent Residents' Commissioner whose job is to make sure we keep to the promises we make in the Charter and to keep it under constant review. Find reports at: [www.gov.uk/government/collections/hs2-ltd-residents-commissioner](http://www.gov.uk/government/collections/hs2-ltd-residents-commissioner)

You can contact the Commissioner at: [residentscommissioner@hs2.org.uk](mailto:residentscommissioner@hs2.org.uk)

### Construction Commissioner

The Construction Commissioner's role is to mediate and monitor the way in which HS2 Ltd manages and responds to construction complaints. You can contact the Construction Commissioner by emailing: [complaints@hs2-cc.org.uk](mailto:complaints@hs2-cc.org.uk)

### Property and compensation

You can find out all about HS2 and properties along the line of route by visiting: [www.gov.uk/government/collections/hs2-property](http://www.gov.uk/government/collections/hs2-property)  
Find out if you're eligible for compensation at: [www.gov.uk/claim-compensation-if-affected-by-hs2](http://www.gov.uk/claim-compensation-if-affected-by-hs2)

### Holding us to account

If you are unhappy for any reason you can make a complaint via the helpline. For more details on our complaints process, please visit our website: [www.hs2.org.uk/how-to-complain](http://www.hs2.org.uk/how-to-complain)

## Contact Us

If you have any questions about this notification of works, please get in touch.

24/7 Freephone **08081 434 434**



Minicom **08081 456 472**



Email **HS2enquiries@hs2.org.uk**



Write to:

**FREEPOST**

**HS2 Community Engagement**

Website **www.hs2.org.uk**

To keep up to date with what is happening in your local area, visit: **www.hs2.commonplace.is**

**Please contact us if you'd like a free copy of this document in large print, Braille, audio or easy read. You can also contact us for help and information in a different language.**

HS2 Ltd is committed to protecting personal information. If you wish to know more about how we use your personal information please see our Privacy Notice <https://www.gov.uk/government/publications/high-speed-two-ltd-privacy-notice>

Reference Number – **HS2-EW-BBV-Ph1-Ar-No-N2-Traf-3-03/08/2021**

High Speed Two (HS2) Limited, registered in England and Wales.  
Registered office: Two Snowhill, Snow Hill Queensway, Birmingham B4 6GA.  
Company registration number: 06791686. VAT registration number: 181 4312 30.